



SOLID ORGANS

Guideline-  
compliant

•  
Can substitute invasive  
biopsy in most cases

•  
Complete diagnostic +  
theranostic work-up

•  
Report in 8-10 days

**Trublood**<sup>®</sup>  
the no risk biopsy

CLINICALLY VALIDATED ON 40,000+ SAMPLES

# Trublood®

## CAN SUBSTITUTE INVASIVE BIOPSIES IN MOST CASES



### A NON-INVASIVE, BLOOD-BASED INVESTIGATION

- ▶ To triage symptomatic individuals who have been advised an invasive tissue biopsy to check for malignancy
- ▶ Patients where an invasive biopsy has been inconclusive or inconsistent with clinical observations
- ▶ Suspected metastatic relapse to rule out a new primary

The anxiety, pain, risks, and costs associated with invasive biopsies for cancer diagnosis are substantial. Yet till date, a reliable, safe, and non-invasive test to establish a diagnosis in suspected cases of cancer has not been available.

Trublood® is a revolutionary non-invasive, cost-effective, safe and accurate blood test that can substitute invasive biopsies in most suspected cases of solid tumors and brain tumors. Starting with a simple 20-25 ml of blood draw, the process involves extremely sensitive, sophisticated and careful isolation and analysis of live circulating tumor cells.

A comprehensive report is provided with unprecedented level of information which was hitherto thought impossible.

Trublood® is the result of several years of research involving our team of more than 150 scientists and clinicians using the world's latest equipment and software. Trublood® has been clinically validated on more than 40,000 samples from patients and healthy individuals to whom we are ever grateful.

Trublood® is a new paradigm in cancer diagnosis and management.

# About Trublood



## What?

Non-invasive diagnostic biopsy to substitute invasive tissue extraction



## For whom?

Every Individual who desires a risk free biopsy



## Why?

Invasive biopsies are risky, inconvenient, painful, and must be performed in a clinical setting. Trublood® sample can be collected from a patient's house or office



## How?

Circulating tumor cells is isolated from a patient's blood sample and extensively analysed for diagnosis, prognosis, and theranostics



## Analytes

Circulating Tumor Cells (CTCs) and their clusters



## Tests

Immunocytochemistry, NGS, FISH<sup>†</sup>



## Sample type

Peripheral blood as per DCG Protocols



## Turnaround time

8-10 Days

## NOTE

Trublood® - Basic test includes protocol for diagnosis only.

PD-L1, Theranostic ICC, cfDNA, Pharmacogenetics, and FISH<sup>†</sup> are available as add-on tests at extra cost



### Usual Tissue Biopsy/FNAC

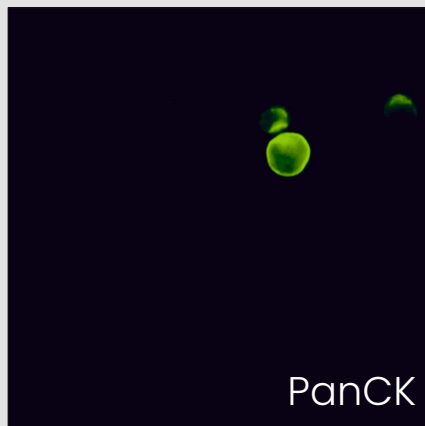
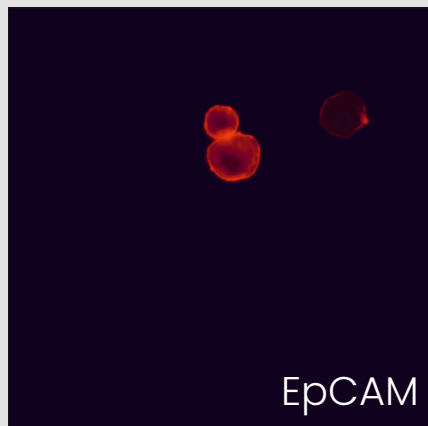
- ▶ Invasive, need tissue and is ultimately expensive
- ▶ Can be performed only in hospital/with Anesthesia
- ▶ Usually painful, may need stitches and leave scars
- ▶ Risk of tumor cell 'seeding'
- ▶ Can be risky for organs like lung, liver, pancreas
- ▶ May be impacted by tumor heterogeneity
- ▶ Serial/sequential biopsies are impossible
- ▶ Not viable if the primary tumor is not easily visualised



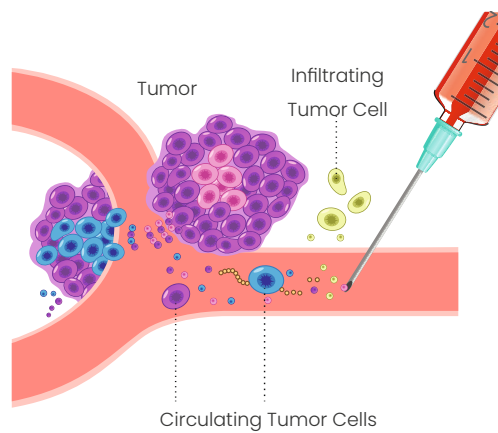
### Trublood®

- ▶ Totally non-invasive and is ultimately less expensive
- ▶ No need for Hospitalization/Anesthesia
- ▶ No pain, No stitches, No scars
- ▶ No risk
- ▶ No risk of injury to any organ/bleeding
- ▶ Provides 'Real-Time' data and covers all active sites
- ▶ Can be performed as often as necessary
- ▶ Viable even if primary/metastasis are undetectable

Illustrative Immunocytochemistry Images  
**BREAST CANCER**



Illustrative  
Image of Analytes



# Validation

---

## Trublood<sup>®</sup>

Trublood<sup>®</sup> non-invasive diagnostic biopsy for solid organ cancers has been developed by Datar Cancer Genetics based on the findings of two clinical trials registered with the CTRI (Registration Nos. CTRI/2019/01/017219 and CTRI/2019/03/017918).

Trublood<sup>®</sup> has been extensively validated with data from more than 22,000 samples from asymptomatic individual donors (who underwent currently used screening tests such as LDCT, Mammography, PAP smear, Serum CA Markers, and clinical examinations), as well as more than 18,000 samples from cancer patients and patients with benign conditions, totalling more than 40,000 evaluable samples till December, 2019.

Overall  
Sensitivity  
**99.8%**

Overall  
Specificity  
**95.4%**

# Publications

---



IJC

International Journal of Cancer

Akolkar D et al. Circulating ensembles of tumor-associated cells: A redoubtable new systemic hallmark of cancer. *International Journal of Cancer*. 2020; 146(12): 3485-3494. DOI: 10.1002/ijc.32815.

---

**AACR**  
Cancer Research

Ranade A et al. Hallmark Circulating Tumor-Associated Cell Clusters Signify 230 Times Higher One-Year Cancer Risk. *Cancer Prev Res (Phila)*. 2021 Jan;14(1):11-16. doi: 10.1158/1940-6207.CAPR-20-0322.

---

  
ACS JOURNALS  
Cancer Cytopathology

Gaya A et al. Evaluation of circulating tumor cell clusters for pan-cancer noninvasive diagnostic triaging. *Cancer Cytopathol*. 2021 Mar;129(3):226-238. doi: 10.1002/cncy.22366.

---

  
Cancer  
Chemotherapy and  
Pharmacology

Clinical Utility of Circulating Tumor-Associated Cells to Predict and Monitor Chemo-Response in Solid Tumors Link : DOI: 10.1007/s00280-020-04189-8

# DATAR CANCER GENETICS

UNITED KINGDOM | GERMANY | INDIA



**Advena Ltd.**,  
Tower Business Centre, 2nd Flr,  
Tower Street, Swatar, BKR 4013, Malta

Contact us:

✉ **UK:** [enquiries@datarpgx.com](mailto:enquiries@datarpgx.com) • **Germany:** [info-eu@datarpgx.com](mailto:info-eu@datarpgx.com) • **India:** [response@datarpgx.com](mailto:response@datarpgx.com)

🌐 [datarpgx.com](http://datarpgx.com)

Proprietary Technology, All Intellectual Property Rights Protected under relevant laws.